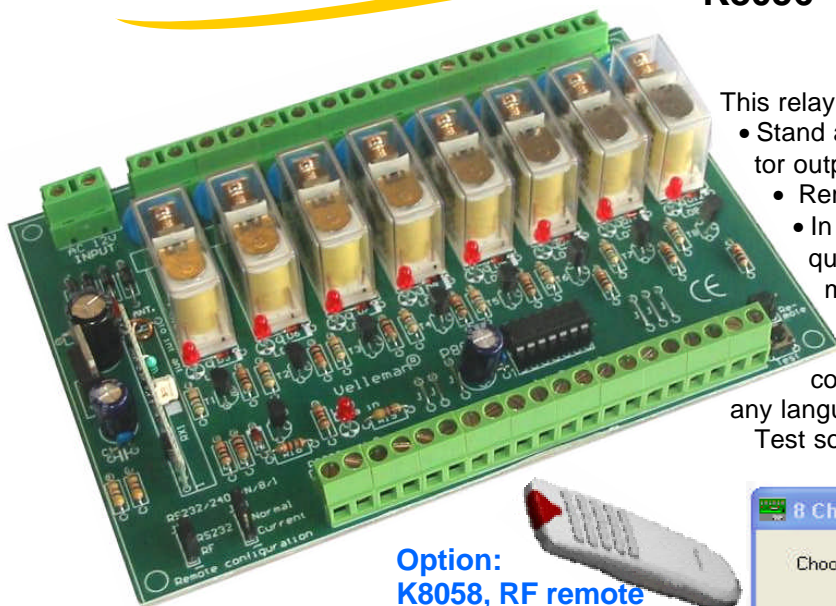




## K8056 Eight channel remote relay card



Option:  
K8058, RF remote  
RX433, RF module



This relay card can be used in several ways;

- Stand alone card, addressed by switches or open collector outputs.
- Remote controlled through RS232.
- In option remote controlled using RF (radio frequency) signals and K8058 remote control+ RX433 module

Since the card can be addressed using RS232 commands, you may write custom applications in any language you want or on any platform you want. Test software can be downloaded from our web site.

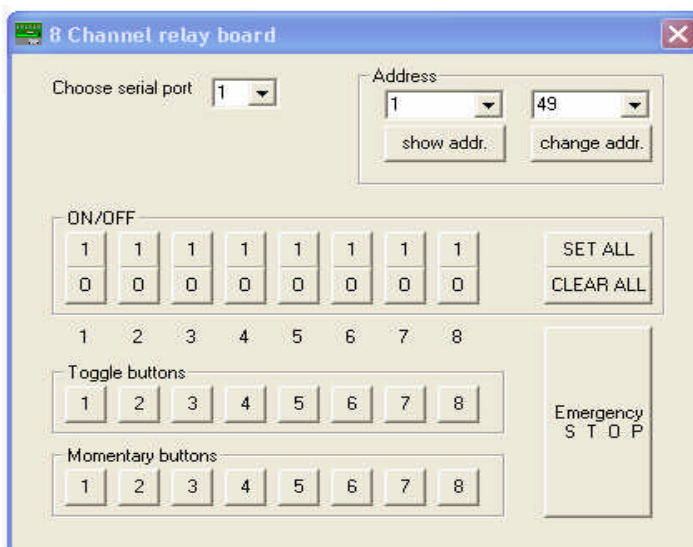
### Specifications:

- Eight high quality relay contacts, 5A/230Vac max.
- Relay outputs are transient suppressed using VDR's
- LED confirmation on each relay contact
- Eight drive inputs to use with open collectors or regular switches
- RS232 input to drive the card with computer or terminal. baud rate: 2400, No parity, 8 data bits, 1 stop bit. High or low impendant selection (10K or 1K)
- Optional RF driving possibility using RX433 type module(\*) Together with K8058 eight channel RF remote control
- Unregulated 12Vdc / 200mA power output
- Power: 12Vac / 500mA (including 12V output)
- Diagnostic software downloadable from our site

#### Minimum system for test software

Pentium class CPU  
Windows 95 or higher  
Mouse and free RS232 port

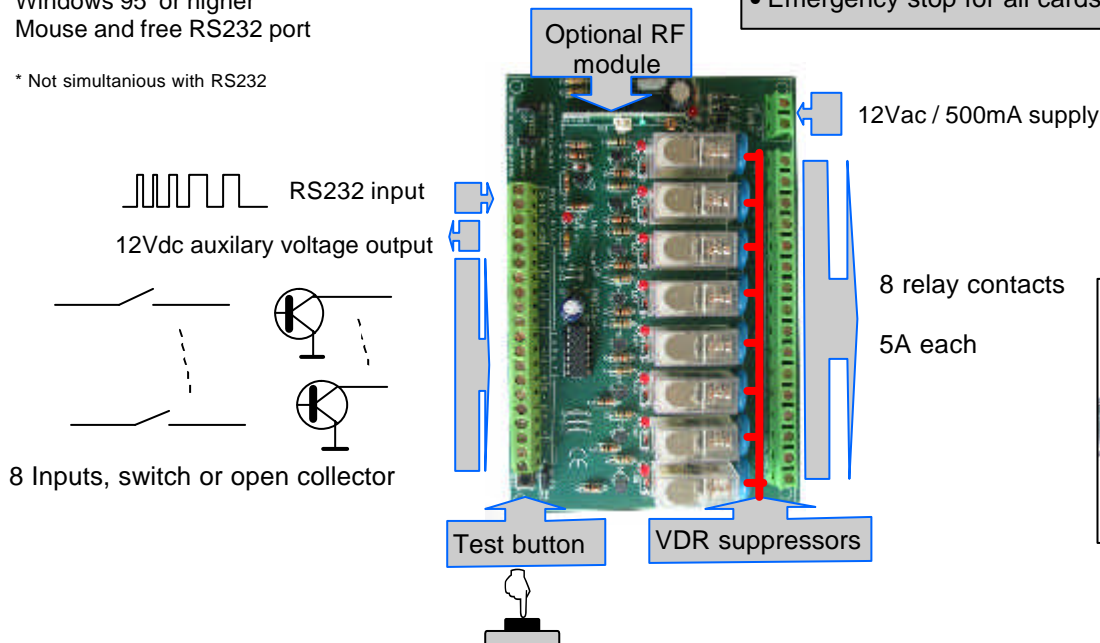
\* Not simultaneous with RS232



### DIAGNOSTIC / TEST SOFTWARE

#### Features:

- Separate relay on/off test with moment or toggle function
- Clear all / set all relays function
- Address selection, up to 255 cards can be selected
- Emergency stop for all cards



B8006 Optional Din rail enclosure